

Hydraulic valve packs

www.innova.no

Innova provide a full range of underwater valve packs for all types of subsea hydraulic control applications; from large intervention tools and large capacity propulsion systems to compact control units. The compact and flexible designs are based on Innova's long experience in development and manufacture of underwater components.

Valve control and communication is provided by Innova's PIO36 pressure tolerant controller boards, enabling full control of the valve pack over a serial or Ethernet network. The Topside software is used to control and monitor all functions of multiple valve packs, or to easily integrate the valve packs into existing control systems. All valve packs are provided with transparent polycarbonate lid and LED indicators on all functions, providing easy visual diagnostics.

Key features

- Flow capacity from 2 to 200 lpm per function - Higher flow available
- Compact and low weight
- High reliability direct control valves as standard (others available on request)
- Proportional or on/off solenoid spool valves (other valve types available on request)
- Proportional pressure reducing valves option
- Pressure sensors in P and T bores
- Easy integration of digital and analogue sensors, such as pressure, temperature and flow sensors, level indicators, read switches etc.
- High resolution analogue inputs
- 3000 m depth rating

GENERAL TECHNICAL DATA

Material: Aluminium 6082-T6, hard anodised Polycarbonate lid

Electrical interface

- Power and Communication:
 - 24 VDC and Ethernet / RS-232 / RS-485
 - Connector: Burton 5506-2008-004
- Interface for external sensors:
 - 4-20 mA / 24 VDC
 - Digital input
 - Connector: Subconn MCBH Series

Hydraulic interfaces: BSP threads

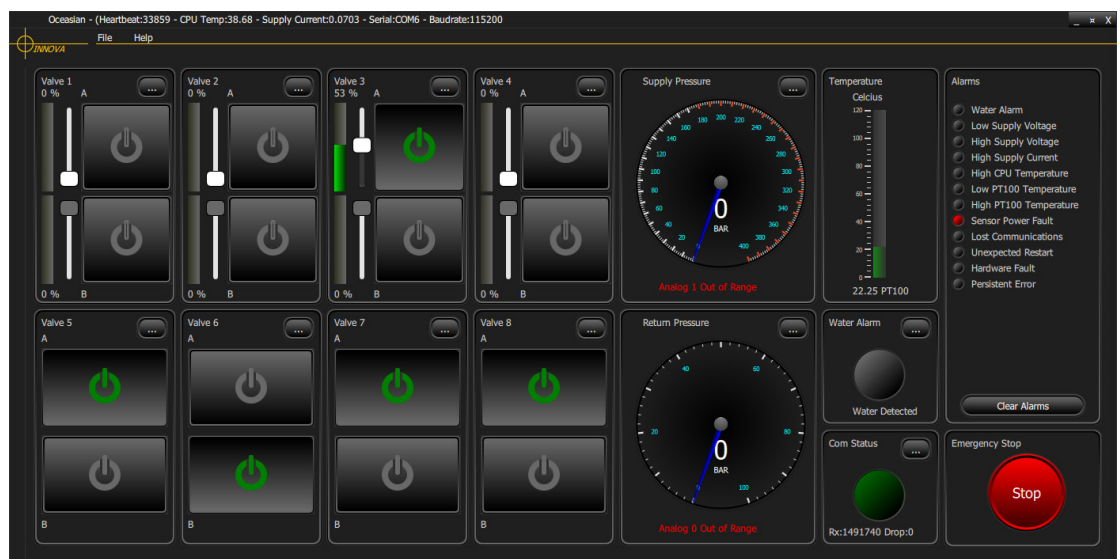
BEST SELLER MODELS

Valve size	No. of valves	P max	Q max / valve	Dimensions L*W*H (mm)		
NG4	8	250 bar	12 lpm	370	250	163
NG6	8	350 bar	80 lpm	400	260	189
Quattro	4	240 bar	22 lpm	183	83	238

SOFTWARE

Can be delivered with standard Innova software with graphical user interface to control each valve, read sensor values, calibrate sensors and log data.

Our software engineers will also assist integration with existing control systems on request.



Innova GUI