



# 80 kNm Gearbox

[www.innova.no](http://www.innova.no)

**The 80kNm Gearbox is an ROV tool designed and tested to operate subsea valves with torque requirement of 80kNm.**

The tool is providing 80 kNm output torque with input torque from standard API17H Class 7 Torque Tool – 3rd Edition. Long version is also available. The Gearbox has been optimized to be ROV flyable, i.e. the submerged weight is 70kg due to buoyancy elements integrated in the design.

The unit is landed on to valve and uses 4 off reaction wings to ensure alignment with valve interface. The Gearbox is then rotated with torque tool to ensure alignment of output shaft with valve stem.

## Key features

- API 17H Class 7 input interface
- 80 kNm output torque
- Submerged weight: 70 kg

The ROV bucket handle on top of the tool is for ROV operation and it is hinged to lay it down before inserting torque tool.

## SIZE & WEIGHT

Size:	Ø450 x 960 (1280) mm
Size in transport box:	500 x 600 x 1600 mm
Weight in air:	165 kg
Weight in water:	67 kg

## INTERFACES

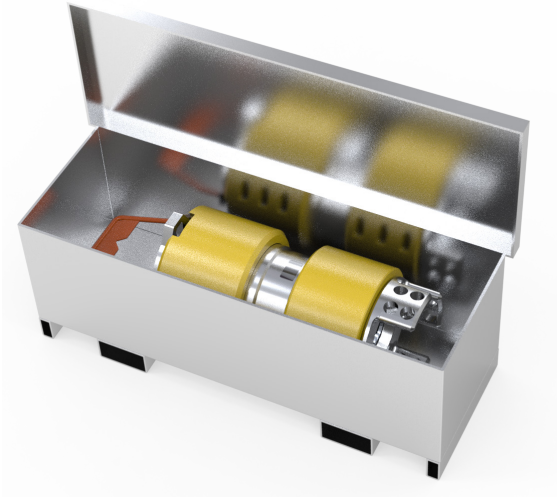
Output:	Equinor TR1243 80 kNm valve interface
Input:	API17H Cl.7 Torque Tool 3rd Edition (long version available)
ROV handling:	Bucket Handle – 90° movement

## RECOMMENDED ACCESSORIES

Cl. 7 Torque Tool:	API17H 3rd Edition (long version optional)
Torque Test Jig:	Equinor TR1243 interface, 80 kNm

## MECHANICAL

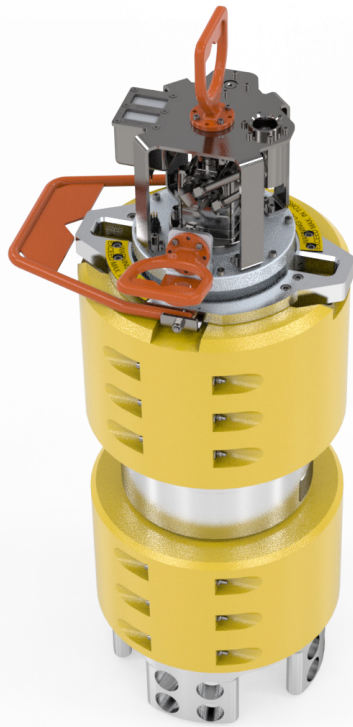
Output torque:	80.000 Nm
Output turns:	Multiple
Depth rating:	3000 m
Pressure compensation:	Integrated



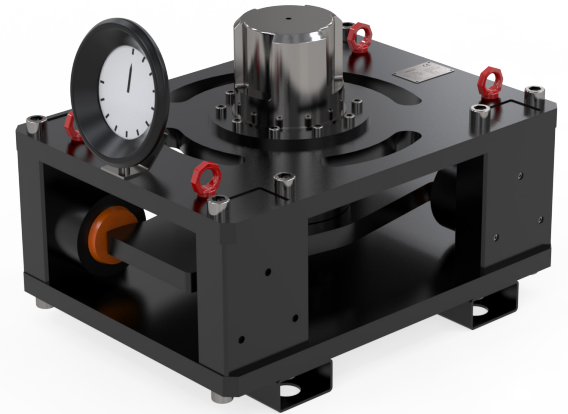
*Gearbox in transportation box*



*Gearbox - Long version*



*Gearbox with Cl. 7 Torque tool*



*Torque Test Jig*