

Position Display Formats

UTM/ Lat-Long
formats

Metres or Feet



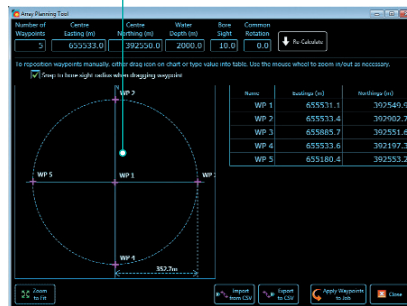
6G Discovery Mode

Automatic detection of
previously deployed
transponders including
their configured address
and channel



Array Planning Tool

Set vessel reference
points and watch circles
for DP operations



User Supplied Ship Shapes

Select DXF file

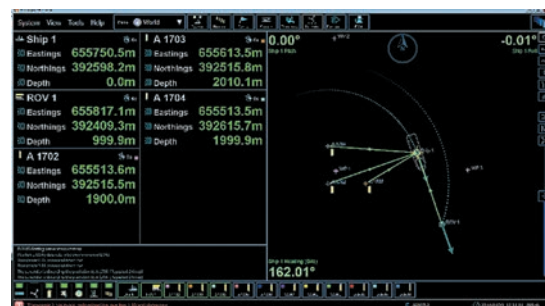
Set CRP offset



© Copyright Sonardyne International Limited. Specifications subject to change without notice. Printed 03/14



RANGER 2 USBL VERSION 4 SOFTWARE



Easier, faster and now more configurable. Upgrade to Ranger 2 V4 operating software and benefit from a completely revised main UI, a centralised transponder management table, an array planning tool for DP operations and support for iWand transponder settings import.

Major New Features

Compatibility

- Full Windows 7 compatibility

Revised Layout

- Improved user messages
- Vessel can be tracked on GPS only
- Positions can now be shown on Lat/Long
- Distances can be shown in US Survey Feet

Navigation Chart

- Highly configurable with layers
- Easier controls
- DXF backdrop option

Beacons Table and Transponders

- Discovery of 6G transponders
- Configurable tracking buttons and position displays
- Group select compatibility
- Integrated iWand support
- SST beacon now has remote control

Networking

- Remote control available via UDP
- Output telegrams available via UDP

Tools

- Auto-stop feature on CASIUS tool
- 'Ship Shape' – a user-supplied DXF
- Array calculator tool which switches off GPS on completion
- Vessel reference points watch circles

Revised User Interface

Message box

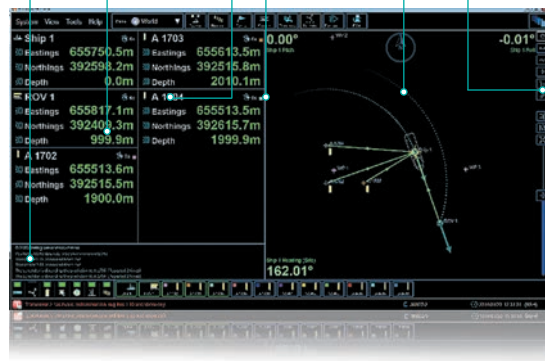
Multi column position display

Main chart view

Configurable to Metres, Feet, UTM or Lat/Long

Moveable splitters

Chart controls



New Beacons Table and Beacons Wizard

Beacon lock

Group select

Dedicated command button for common functions

Show Tracking command



Add Beacons Wizard

Beacon type

Address

IIS/CIS

Options:

- Add to ROV
- Skip Telemetry
- Responder Trigger

