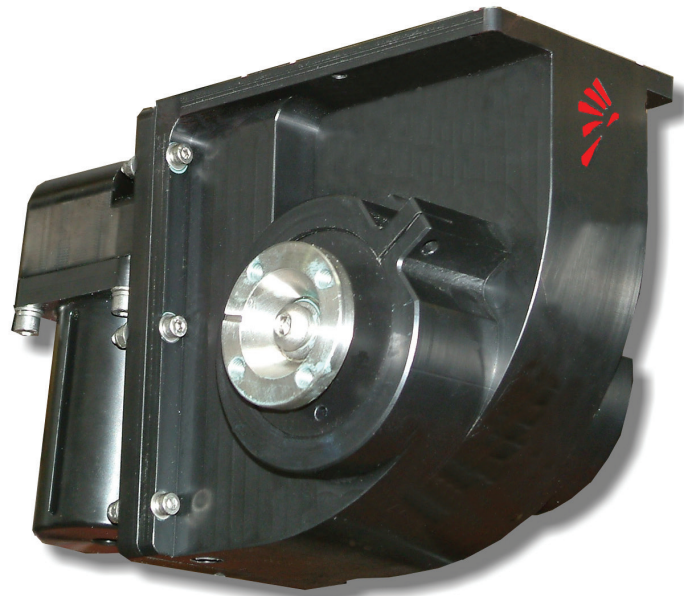


# Rotator / Tilt Unit

24Vdc



This versatile tilt / actuator unit is used on all our small electric ROV's for camera positions but also as a latching actuator in our TMS systems.

With feedback potentiometers and adjustable limit switches supplied as standard, these rugged units are the perfect choice for the positioning of industry standard subsea cameras and sensors. The gearing system is overrated to resist damage due to collisions.

They are oil filled and positively compensated, making them suitable for operation at extreme depth and can be supplied with a range of electrical connector types

## FEATURES

- 24 Volts DC
- Top Mounting Flange
- Low Backlash
- Position Feedback
- Robust Design
- Adjustable Limit Switches
- Integrated Positive Pressure Compensator
- Can be Inverted
- Various Connector options

## SUB-ATLANTIC PART NUMBERS

- 24 Vdc version (Standard): SA-A-0245-MAS
- Drawing number: 0020-GA

## Specifications

<b>DEPTH RATING</b>	3000 metres (6000 optional)
<b>OUTPUT TORQUE (STANDARD)</b>	15Nm
<b>NOMINAL SPEED (STANDARD)</b>	3.6 RPM
<b>NOMINAL CURRENT</b>	1.25 Amps
<b>VOLTAGE</b>	24 Vdc
<b>WEIGHT IN AIR</b>	3.45kg

## FORUM SUBSEA TECHNOLOGIES

Aberdeen: +44 (0) 1224 798660  
Houston: 1 713 329 8230  
Singapore: +65 657 64300  
Brazil: +55 21 2588 8016  
Kirkbymoorside, York +44 (0)1751431751  
sub-atlantic.sales@f-e-t.com  
www.f-e-t.com/contact