

Surveyor-HD-Pro

Ultra Wide Angle HD Colour Zoom Camera

Water corrected optics

The Teledyne Bowtech SURVEYOR-HD PRO ultra-wide angle underwater HD camera is designed to provide the widest angle of view, whilst remaining compact and very competitively priced. The camera is ideal for ROV inspection tasks, scientific observation and broadcast applications. Video output is available as HD or HD-SDI over fibre.

Video output is available as component (Y/Pb/Pr), utilising standard connectors or HD-SDI on hybrid 75Ω coaxial or fibre optic connectors, a composite video output is also available. The camera is available in a variety of control formats, including the Teledyne Bowtech GUI, which facilitates the control of all features including white balance, auto tracking and back light compensation, which can be switched on or off using the GUI.

Excellent images are obtained, through the fused silica hemispherical window and the camera is ideal for overall scenes and close-up inspection. The camera uses a Bluetooth tablet for control setup. The optics are fully corrected for geometric and chromatic aberration. The camera is housed within a 4,000 metre rated titanium housing with a 6,000 metre option.



Applications: ROV/AUV, Defence

PRODUCT FEATURES AND BENEFITS

- High definition 1080p
- Fully geometric and chromatic aberration water corrected optics
- Component, HD-SDI or HD- SDI over fibre output
- 100° ultra-wide diagonal angle of view
- 4000m or 6000m depth rated titanium housing



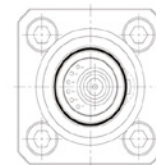
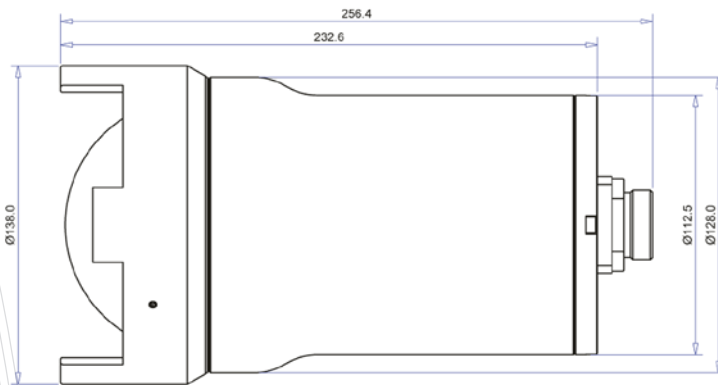
TELEDYNE BOWTECH
Everywhereyoulook™

Surveyor-HD-Pro

Ultra Wide Angle HD Colour Zoom Camera

TECHNICAL SPECIFICATIONS

Electrical	Image Size	1920 H x 1080 V, 1280 H x 720 V, 720V x 576 H
	Sensor Type	1/2.8-type Exmor CMOS
	Limiting Scene Illumination	1.7 lux
	Signal to Noise Ratio	>50 dB
	Power Consumption	12 to 24 Vdc
	Current	300 mA typical
	HD Video Output	Component, HD-SDI or HD-SDI over fibre output
	HD Format	1080p/60 1080p/50, 1080i/50, 1080p/30, 1080p/25, 720p/60, 720p/50
Environmental	Control Options	Single wire tristate, two wire bipolar, RS232 or RS485 input, Bluetooth tablet control
	Depth Rating	4000m or 6000m options
	Storage Temperature	-20°C to +60°C
	Operating Temperature	-5°C to +60°C
	Shock	3 axis (operating), 30g peak, 6ms half-sine pulse
Optical	Vibration	10g, 20-150Hz
	Optical Zoom	30:1 4.6mm to 138.0mm focal length
	Iris	Automatic, f1.6 to close
	Focus Control	10mm to infinity (wide), 1500mm to infinity (zoom)
	Angle of View	100° diagonal in water, 100° diagonal in air
Mechanical	Window	Fused Quartz hemisphere
	Dimensions	138.0mm (front retainer) (d) x 232.62mm (l) (excluding connector)
	Weight in Air	5.5kg
	Weight in Water	2.56kg
	Standard Housing	Titanium alloy grade 5 6AL-4VASTM B3 48
Standard Connector	Large selection of connectors available	



MINI-551506-75OHM6x20-FCR



5506-1508



OPT-8-FCR



OPT-1-FCR



Specifications subject to change without notice.
© 2016 Teledyne Bowtech Ltd. All rights reserved.



www.teledynemarine.com
Email: bowtech_sales@teledyne.com

Head Office
International Avenue,
ABZ Business Park,
Dyce, Aberdeen
AB21 0BH, UK
Tel: +44 (0)1224 772345
Fax: +44 (0)2114 772900

Houston
10661 Shadow Wood Drive,
Houston, TX 77043, USA
Tel: +1 281 710 7276
Fax: +1 281 712 1757