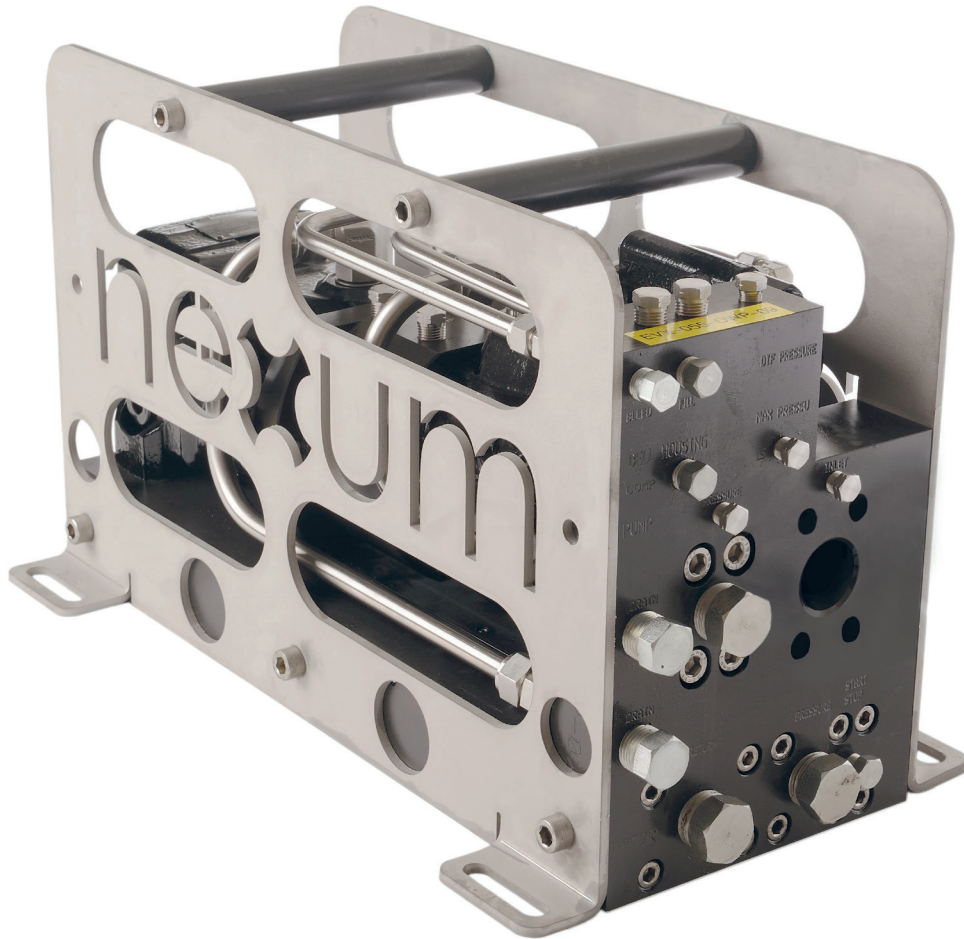

○ The Nexum Dirty Work Pack is compact, simple to incorporate, and service friendly.



Compact unit with well proven components integrated, service friendly with all hydraulic connections located in the end.

The motor circuit on the Dirty Work Pack (DWP) has a built in start/stop valve for remote start/stop, and has a flow regulator valve for speed control.

The pump circuit has a built in pressure relief valve. The pump can be internally pressure compensated, remote pressure regulated or connected to a load sensing valve system.

Soft start function integrated to insure fully utilization at all times.

When the supply and pump pressure is the same, the flow rate is 66% of supply flow.

The unit is rated to full ocean depth.

The DWP can be delivered as a complete unit with oil filters and compensators. The skid can be assembled as a backpack for rear end interface, or a flat skid for interface underneath the ROV.

For further information visit: www.nexum.no

Dirty Work Pack

Technical Specification:

Max supply pressure... **210 bar**
Max supply flow **90 L/min**
Max output flow @ **210 bar**
Flow..... **60 L/min**
Efficiency is rated to **66%**.

Weight and dimensions:

Weight in air..... **65 kg**
Weight submerged **55 kg**

Main Dimension:

590 x 350 x 250mm (W x H x D)

Interfaces:

Base plate interface:

4 x Ø13, 475-555 x 220mm

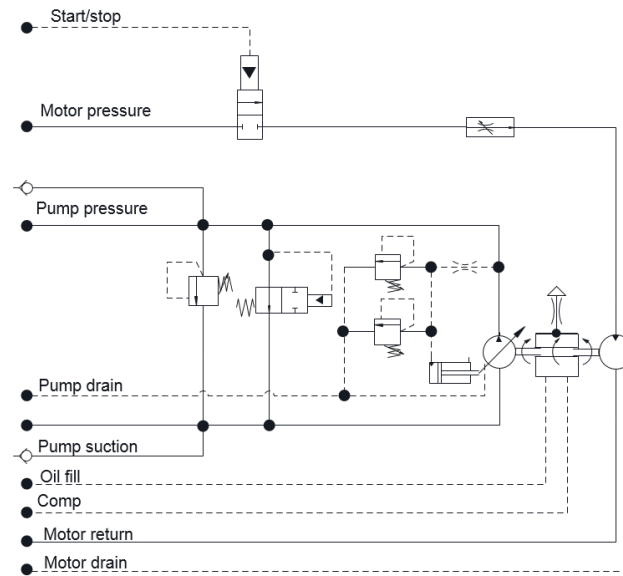
Motor supply port **3/4" NPT**
Motor return port **3/4" NPT**
Pump pressure port **3/4" NPT**
Pump suction port..... **1-1/4 SAE 3000**
Motor stop/start port.. **1/8" NPT**
Pump remote port **1/8" NPT**
Motor drain port **1/2" NPT**
Pump drain port..... **1/2" NPT**
Bell housing ports **x4 1/4" NPT**

FEATURES:

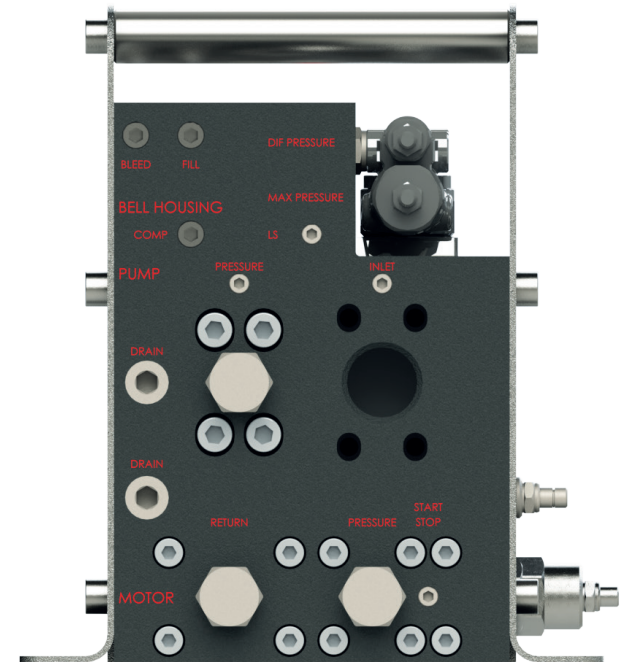
- Compact design
- Adjustable to customer requirements
- Soft start function
- All interfaces in one end
- Full ocean depth
- Service friendly

For further information visit: www.nexum.no

Hydraulic schematic:



Hydraulic interfaces:



Note: technical specifications are subject to change without notice. We accept no liability for any inaccuracy or printing errors.