

# Quattro



**The Innova Quattro is an ultra-compact hydraulic controller unit with 4 valves each capable of providing up to 22 lpm hydraulic flow, proportionally controlled over a serial line. The system is ideal for controlling hydraulic tooling, such as torque tools, inspection tools etc, and generally for increasing the capacity of any ROV or tooling system in a simple manner.**

The Quattro system is based on a compact, oil-filled, pressure-compensated housing containing 4 off 4/3-way proportional valves. The pressure on two of the valves is controlled via an integrated proportional pressure reducing valve. Pressure is monitored via two pressure sensors, one measuring full

system pressure and one measuring the reduced pressure. This configuration provides 2 A and B ports with proportionally controlled flow and pressure, and 2 A and B ports with proportionally controlled flow at full pressure.

All functions are controlled via RS232 or RS485 serial line. The system has spare IO to monitor external sensors such as torque sensors, and to operate external valve functions.

On the surface, all tool functions are controlled and monitored via a user-friendly software package. Other surface control options, such as dedicated software or hand-controllers are available.

# Quattro



## Technical specifications:

### Valve configuration:

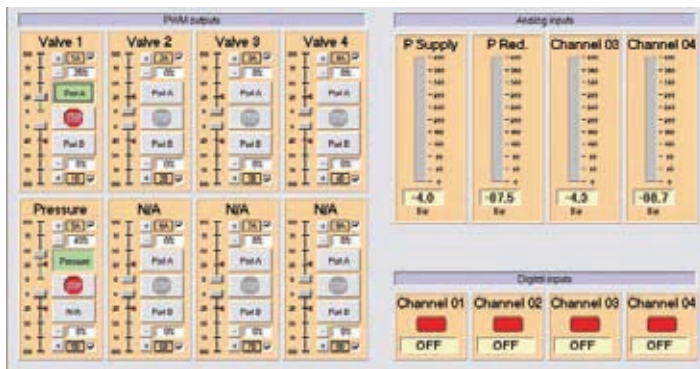
- 4 off 4/3-way proportional valve functions, each capable of 22 lpm
- 1 off proportional pressure reducing valve
- 2 off pressure sensors

### Innova PWM 16 controller module:

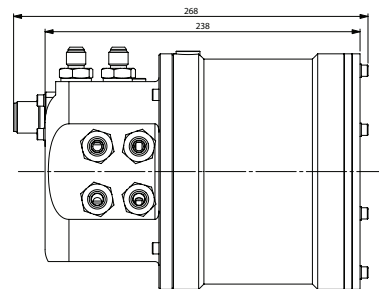
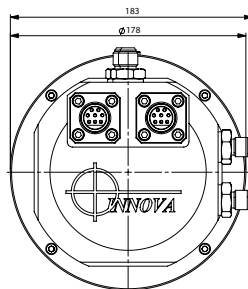
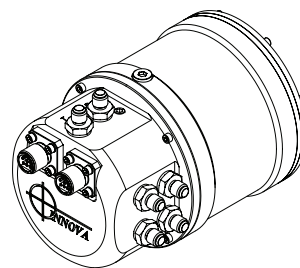
- 16 off PWM outputs (9 for controlling the valves, 7 spare)
- 6 off 10-bit analogue inputs (2 for pressure sensors, 4 spare for torque feedback or similar)
- 4 off isolated digital inputs (for pulse type turns counter, proximity sensors or similar)
- RS232 and RS485 serial communication

### Interfaces:

- Burton 5506-1508 connector
- Power requirement: 24VDC
- Size: 268 x Ø178 mm including connectors
- Material: Aluminium 6082-T6, hard anodized
- Depth rating: 3000 m



Note: technical specifications are subject to change without notice. We accept no liability for any inaccuracy or printing errors.



Version: Rev.2/GGT

17.01.2013

Note: technical specifications are subject to change without notice. We accept no liability for any inaccuracy or printing errors.

INNOVA TECHNOLOGY

INNOVA