

# 5 station

## Hydraulic Valve Pack NG6 Series

[www.innova.no](http://www.innova.no)

**Subsea valve pack with 5 of ISO4401-02 NG6 valves. Available with solenoid and/or proportional valves.**

Valve control and communication is provided by Innova's PIO36 pressure tolerant controller boards, enabling full control of the valve pack over a serial network.

Innova's topside GUI software is used to control and monitor all functions of single or multiple valve packs. The valve packs can also easily integrate into an existing control system via serial or Ethernet network (Modbus RTU or TCP).

The valve pack has a transparent lid and LED indicators on all functions, providing visual indication of operation during testing and diagnostics.

### Key features

- 5 off 4/3-way valves
- Solenoid and/or proportional valves
- Pressure transmitters
- Temperature sensor
- Connectors for external signals
- 3000 m seawater depth rating

## HYDRAULIC FUNCTIONS

5 off 4/3-way NG6 control valves

- Design pressure: 250 bar
- Valve nominal flow = 5 to 80 lpm
- Valve max pressure = 250 bar
- Pressure transmitters on the P and T ports

## INTERFACE

- G1/2 hydraulic supply port
- G1/2 hydraulic return port
- G3/8 hydraulic outlets port
- G3/8 hydraulic port for drain and fill
- G3/8 for comp. relief valve
- 1 x 5506-2008 for power and communication
- 3x connectors for external signal

## MECHANICAL

- Hard anodized aluminium housing
- Polycarbonate lid
- Weight in air: 30 kg - In water: 18 kg
- L x W x H: 400 x 245 x 156 mm (excl. connectors)
- External compensation
- 3000 m seawater depth rating

## ELECTRICAL

- Innova PIO36 pressure tolerant embedded controller
- 16 x 24V PWM or on/off function - 2 A per function
- 16 x analog inputs (16 bits ADC)
- 4 x isolated digital inputs 24 VDC
- Ethernet, RS-232 or RS-485 communication link
- Max power consumption: 10 A @ 24 VDC
- Water alarm
- Temperature sensor

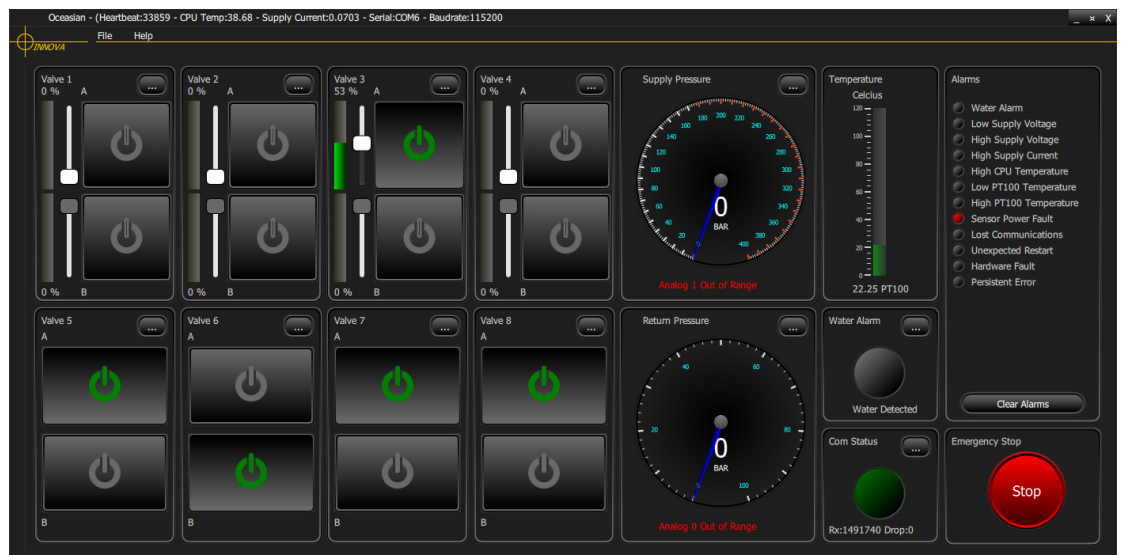


Valve pack with transportation box and accessories

## SOFTWARE

Can be delivered with standard Innova software with graphical user interface to control each valve, read sensor values, calibrate sensors and log data.

Our software engineers will also assist integration with existing control systems on request.



Innova GUI